

HIGH-PERFORMANCE

SUPERIOR VALUE

TECHNICAL EXPERTISE

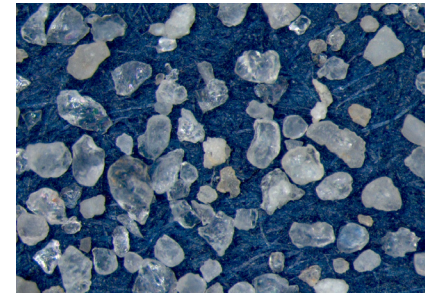
24/7 CUSTOMER SERVICE

SHALE FRAC® SAND SERIES - Hydraulic Fracturing Sand



U.S. Silica's Shale Frac® quartz proppant is produced from regional sandstone formations in the Southern and Northeastern United States, and is processed and sized at seven of our regional sand plants.

Our Shale Frac® proppants are produced at locations in close proximity to the Permian, Eagle Ford, Midcon, and Marcellus regions, generally resulting in lower delivered costs to the wellhead. For some shallower wells, sand from regional sandstone formations will produce a superior return on investment relative to premium sands shipped from greater distances.



TYPICAL PARTICLE SIZE ANALYSIS AND PHYSICAL PROPERTIES

Plant	Berkeley Springs	Hurtsboro	Mauricetown	Columbia	Dubberly	Kosse	Jackson
Product Name	Shale Frac 40	Shale Frac 100	Shale Frac 100	Shale Frac 100	Shale Frac 100	Shale Frac 100	Shale Frac 100
Particle Distribution [weight retained%]							
+50	94.2	49.3	1.5	48.5	20.7	28.9	49.5
-50+140	5.6	49.8	90.6	50.2	78.6	69.9	50.3
Krumbein Shape Factor							
Roundness	0.4	0.4	0.4	0.6	0.5	0.5	0.4
Sphericity	0.6	0.7	0.6	0.5	0.7	0.7	0.6
Other							
Bulk Density [g/cm ³]	1.35	1.38	1.35	1.40	1.40	1.40	1.41
Particle Density [g/cm ³]	2.65	2.67	2.67	2.66	2.66	2.66	2.66
Crush Resistance [K-value]	9K	5K	5K	6K	6K	6K	7K
Acid Solubility [%]	0.6	0.6	1.4	0.9	2.1	2.1	0.9
Turbidity [NTU]	314	189	248	140	84	236	157

Disclaimer: The information set forth in this Product Data Sheet represents typical properties of the product described; the information and the typical values are not specifications. U.S. Silica Company makes no representation or warranty concerning the products, expressed or implied, by this product data sheet.

Warning: The product contains respirable crystalline silica-quartz, which can cause silicosis (an occupational lung disease) and lung cancer.

USS1901

CONTACT US TODAY:



844-GOT-SAND



FRACSAND@USSILICA.COM

© U.S. Silica Company 2016. All Rights Reserved.